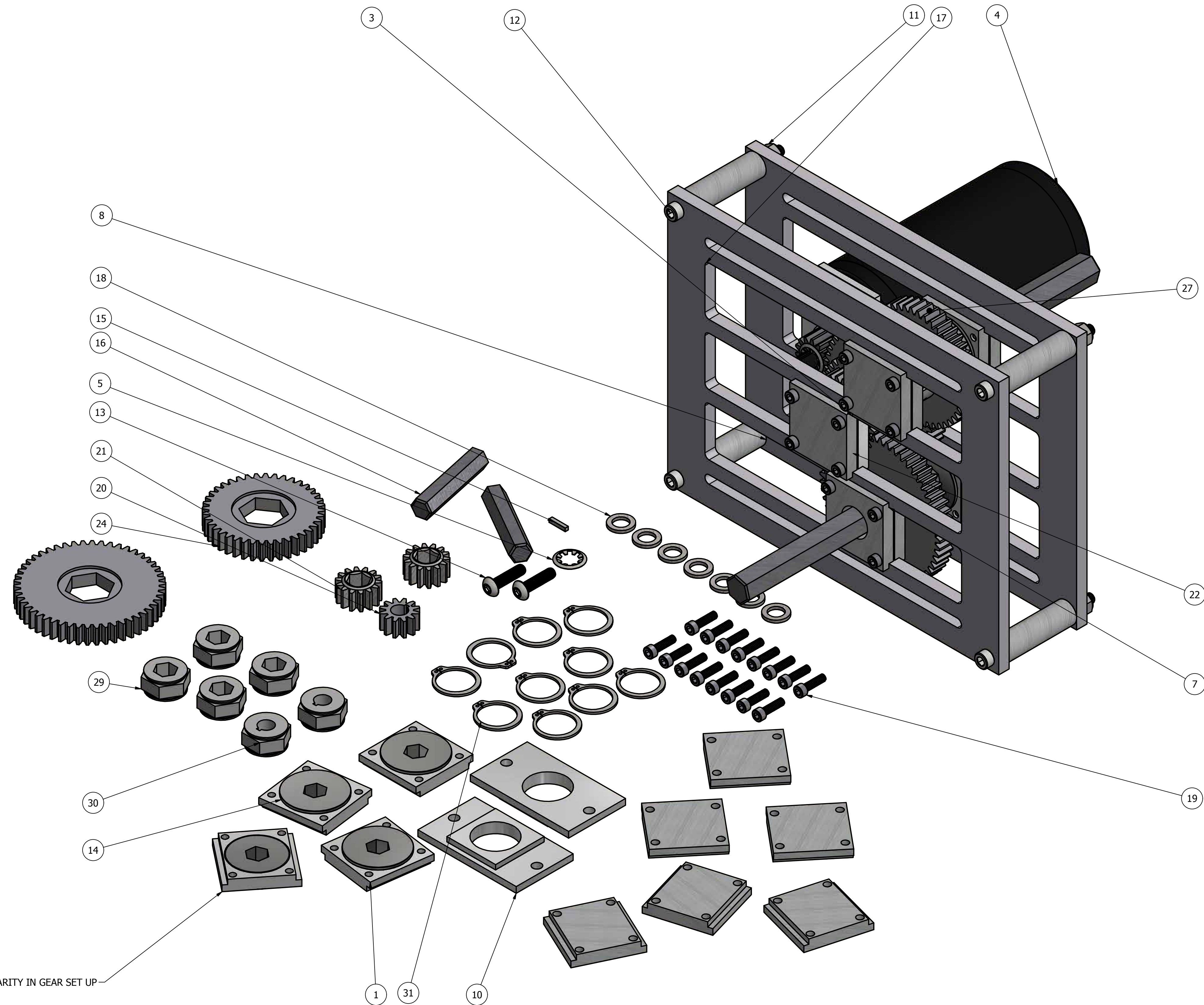


REVISION HISTORY			
REV	DESCRIPTION	DATE	APPROVED
B	ADDED FLEX HUBS	11/13/2012	D.RICHARDSON



NOTES:  
 1. ALL DIMENSIONS INCHES UNLESS OTHERWISE SPECIFIED. DIMENSIONS AND TOLERANCES ARE IN ACCORDANCE WITH ANSYS Y14.5 REMOVE BURS AND BREAK ALL SHARP EDGES .02 MAX.  
 2. UNLESS OTHERWISE SPECIFIED TOLERANCES: .XX = ±.01; .XXX = ±.005; ANGLES ±1°  
 3. THIS IS A SUGGESTED POTENTIAL ASSEMBLY AND CONFIGURATION FOR THE MODULOX LUNCH BOX KIT. THIS GEARBOX IS RECONFIGURABLE WITH SPARE PARTS AND ADDITIONAL ACCESSORIES AVAILABLE FOR PURCHASE.

PARTS LIST			
ITEM	QTY	PART NUMBER	DESCRIPTION
1	10	AM-0862	BEARING BLOCK FOR MODULOX
2	4	AM-0279	1/2" Hex Bore, Flanged, Shielded Ball Bearing
3	10	AM-0854	BACK BLOCK FOR MODULOX
4	1	AM-0255	NOT INCLUDED IN KIT!
5	2	AM-0033	RETAINER CLIP, 8MM ID
6	1	AM-0034	CIM GEAR, 14 TOOTH
7	2	AM-0861	THRU BLOCK FOR MODULOX
8	4	AM-2355	RAIL SPACER FOR MODULOX
9	2	AM-0856	1/2" HEX SHAFT X 5" LONG FOR MODULOX
10	4	AM-0860	MOTOR RECEIVER FOR MODULOX
11	4	AM-1042	10-32 NYLOCK NUT, STEEL, ZINC PLATED
12	4	AM-1024	#10-32 X 2-1/2" SHCS
13	4	AM-1047	#10-32 X 3/4" SHCS
14	6	AM-0692	3/8" HEX BORE, SHIELDED, FLNGED BALL BEARING, 1.125" O.D.
15	2	AM-1121	2X2X10 MM MACHINE KEY
16	3	AM-2356	SHAFT, HEX 3/8" X 1.85" LONG
17	2	AM-0859	3 SLOT MODULOX PLATE
18	12	AM-1009	5/16" FLAT WASHER
19	40	AM-1237	SHCS, 6-32 X .5", STEEL, ZINC
20	1	AM-0741	12 X 520 TOOTH CIM GEAR
21	2	SW-GEAR-20DP-14T	GEAR, STANDARD WIDTH, 20DP, .375 HEX BORE, 14 TOOTH
22	1	FH-GEAR-20DP-28T	GEAR, FLEX HUB, 20DP, 28 TOOTH
23	2	FH-GEAR-20DP-50T	GEAR, FLEX HUB, 20DP, 50 TOOTH
24	1	FH-GEAR-20DP-40T	GEAR, FLEX HUB, 20DP, 40 TEETH
25	1	FH-GEAR-20DP-35T	GEAR, FLEX HUB, 20DP, 35 TEETH
26	2	iR3-500-Hex-A	SHAFT COLLAR, STND, .500 HEX
27	1	FH-GEAR-20DP-56T	GEAR, FLEX HUB, 20DP, 56 TOOTH
28	3	FH-HUB-.5HEX	HUB, FLEX HUB, .500 HEX
29	7	FH-HUB-.375HEX	HUB, FLEX HUB, .375 HEX
30	2	FH-HUB-8MMKEY	HUB, FLEX HUB, 8MM, 2MM KEYWAY
31	20	97633A250	SNAP RING, STND, .75 ID
32	1	FH-GEAR-20DP-45T	GEAR, FLEX HUB, 20DP, 45 TOOTH

ISOMETRIC VIEW

SPARE PARTS FOR ADDED MODULARITY IN GEAR SET UP

DRAWN D.RICHARDSON	9/1/2011	iR3 CREATIVE ENGINEERING	
CHECKED		TITLE	
QA		THE BOX, SUGGESTED ASSEMBLY 1	
MFG		SIZE D	DWG NO AM - 0848_ASSEMBLED
APPROVED		SCALE 1:1	REV B
		SHEET 1 OF 2	